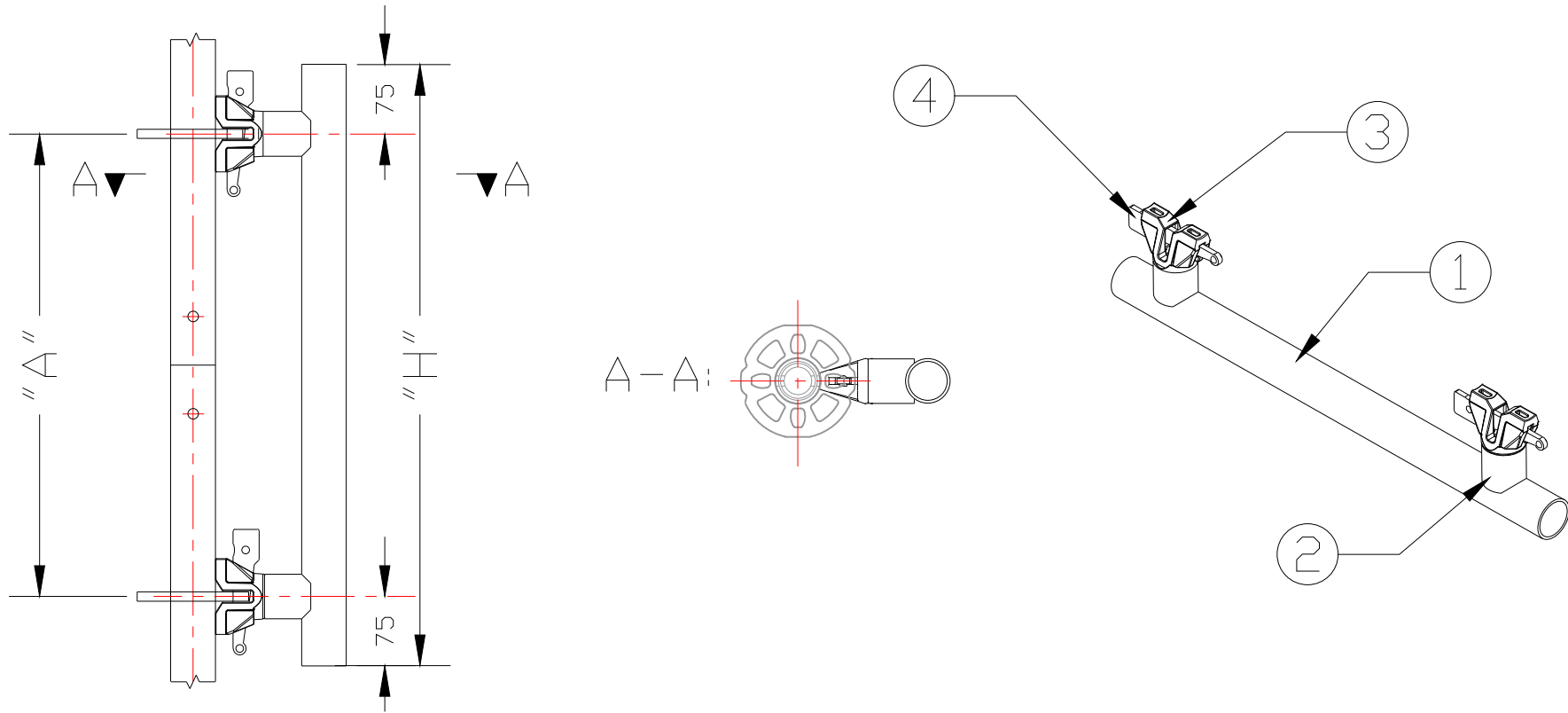


Leg Lock



LEG LOCK DIAGRAM

NOTES:

1. LEG LOCKS SECURE 2 STANDARDS TOGETHER BY ATTACHING TO THE TOP AND BOTTOM ROSETTES
2. ALL UNITS ARE MILLIMETERS UNLESS OTHERWISE LABELLED

TRACEABILITY CODE:

NSPMMYYXXX

— REFERENCE NUMBER

— YEAR CODE

— MONTH CODE

— NORTH SCAFFOLD PRODUCTS LTD.

ITEM NO.	HEIGHT "H"	SPAN "A"	WEIGHT	COMPONENTS	
				S.NO.	DESCRIPTION
01RLL050G	2'-2" [650]	1'-8" [500]	3.8kgs/8.4lbs	1	VERT. TUBE
				2	HOR. TUBE Ø42mm
				3	LEDGER END
				4	WEDGE