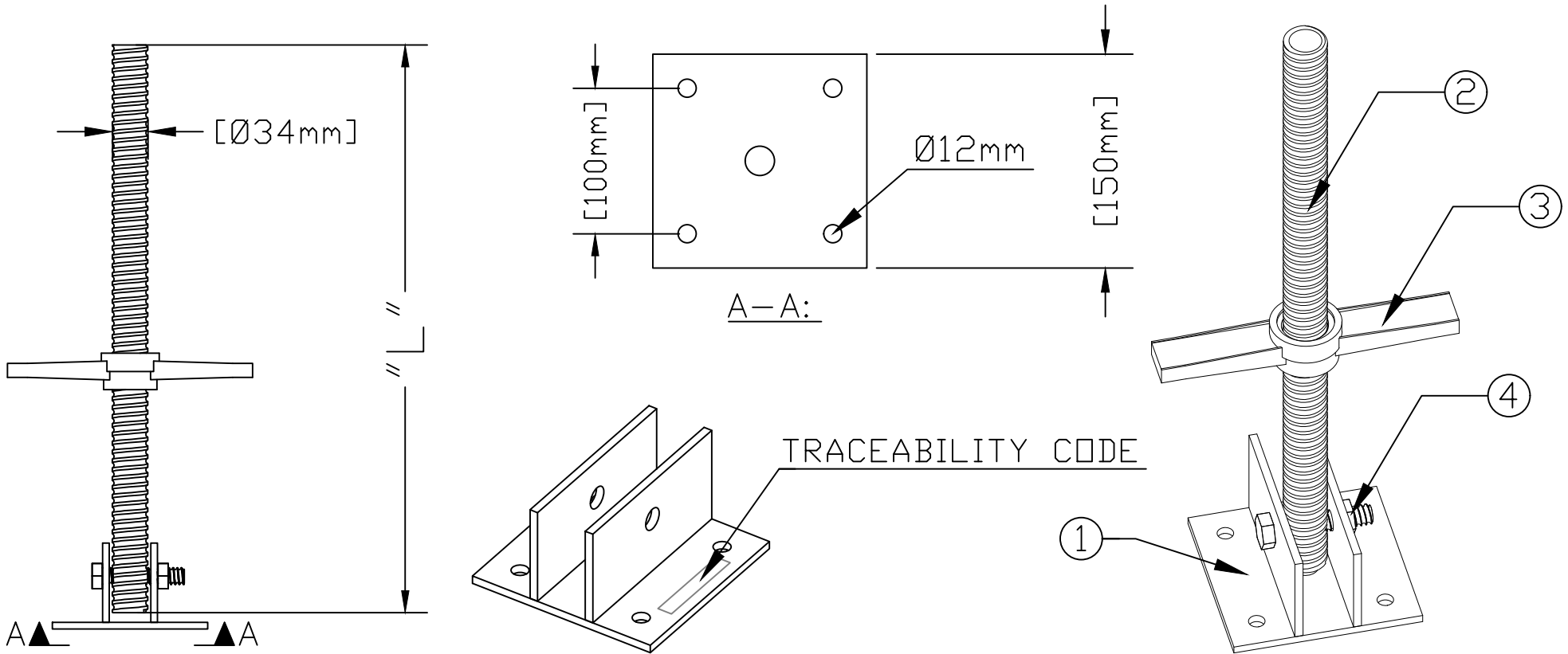


Ø34mm Swivel Screwjack



Ø34MM SWIVEL SCREWJACK DIAGRAM

NOTES:

1. ABOVE DIAGRAM DOES NOT DEPICT THE EXACT LAYOUT OF ALL SCREWJACKS
2. THE STATE OF THE SCREWJACK DETERMINES WHETHER OR NOT THE THREADED SHAFT IS SOLID OR HOLLOW
3. MAXIMUM LOADING IS WITH A 4:1 SAFETY FACTOR
4. ALL ALT. UNITS ARE MILLIMETERS

ITEM NO.	LENGTH "L"	STATE	WEIGHT	MAX LOAD	COMPONENTS	
					S.NO.	DESCRIPTION
02SSJ024E	2'-0" [609.6]	HOLLOW	5.25kgs/11.6lbs	4500LBS @18" MAX	1	BASE PLATE
					2	THREADED SHAFT
					3	SWIVEL
					4	HEX BOLT & NUT

TRACEABILITY CODE:

NSP02180801

- BATCH CODE
- YEAR CODE
- MONTH CODE
- NORTH SCAFFOLD PRODUCTS LTD.